

# EASY TO APPLY, REPOSITION AND REMOVE

# Effortless Signage



Nekoosa's Effortless Signage product portfolio includes a variety of printable substrates that make it easy for individuals of all skill levels to apply, reposition and remove graphics, without leaving a trace of residue behind.

**Trifecta®** One product, endless applications. Create floor, wall and window graphics with one universal media ... Trifecta. This multipurpose pressure sensitive vinyl features a UL 410 slip resistant certification.

**Hi-Stat®** Hi-Stat cling vinyl is a very soft, flexible vinyl which adheres to most clean, high polished surfaces without adhesive. Also available in Opti-Cling, for optically clear applications.

**Sign-Ad®** A flexible calendered vinyl coated with a low or moderate-tack adhesive for easy-to-apply, removable window graphics.

**Wall Graphics®** Nekoosa's Wall Graphics product portfolio is a comprehensive offering of repositionable, removable vinyl films for a wide range of indoor and outdoor wall applications. *Now available with two adhesive options; Microsphere Removable (<1 year clean removability) or High-Peel removable (<6 months clean removability).*

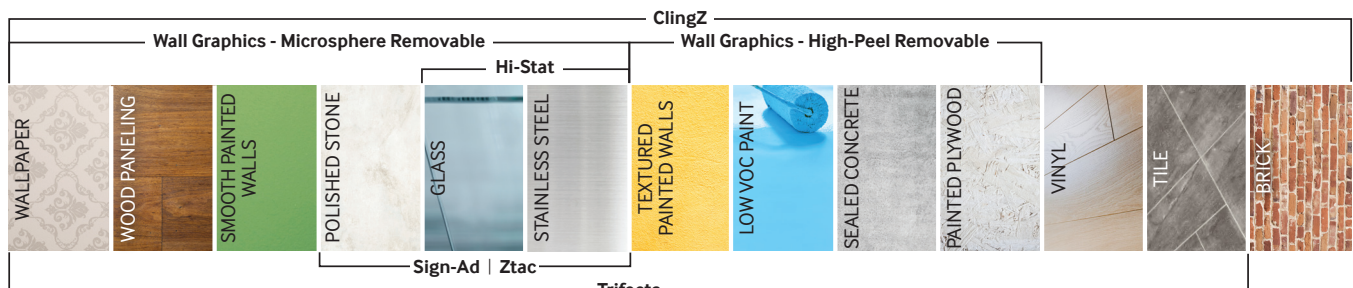
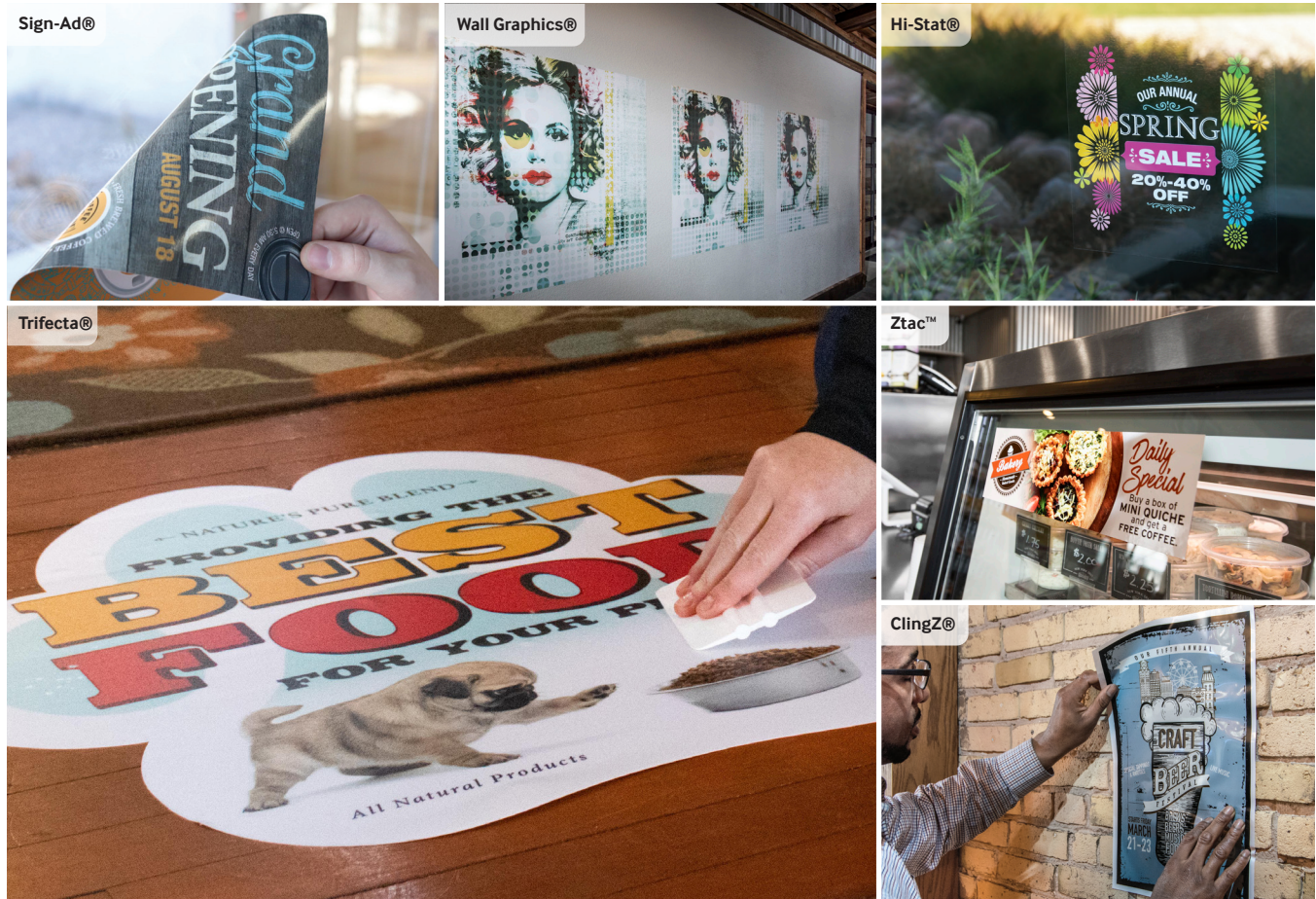
**ClingZ®** ClingZ is an adhesive free, electrically charged graphic film that adheres to any clean, dry interior surface.

**Ztac™** Ztac is an ultra low-tack and repositionable polyester film designed for easy application and removal on very smooth indoor surfaces.

**For FREE sample sheets or rolls, contact [samples@nekoosa.com](mailto:samples@nekoosa.com) today**



## EFFORTLESS SIGNAGE



### FEATURED APPLICATION

#### One-Step Graphic for Floors, Walls and Windows

Create floor, wall and window graphics with one universal, multipurpose media ... **Trifecta®**. This 6 mil semi-rigid white textured facestock is suitable for both indoor and outdoor applications.



Contact [samples@nekoosa.com](mailto:samples@nekoosa.com) for free sample sheets or rolls | OFFERING CUSTOM SIZES, ROLLS AND SHEETS

	<i>Trifecta™</i>	<i>Hi-Stat®</i>	<i>Sign-Ad®</i>	<i>Wall Graphics®</i> Microsphere Removable	<i>Wall Graphics®</i> High Peel Removable	<i>ClingZ®</i>	<i>Ztac™</i>
WALL PAPER	•			•		•	
WOOD PANELING	•			•		•	
SMOOTH PAINTED WALLS	•			•		•	
POLISHED STONE	•		•	•		•	•
GLASS	•	•	•			•	•
STAINLESS STEEL	•	•	•			•	•
TEXTURED PAINTED WALLS	•				•	•	
LOW VOC PAINT	•				•	•	
SEALED CONCRETE	•				•	•	
PAINTED PLYWOOD	•				•	•	
VINYL	•					•	
TILE	•					•	
BRICK						•	