



Eye catching metallic, reflective and glittering vinyls for cut lettering applications and printed graphics.

## VinylEfx

Available in both Indoor Decorative and Outdoor Durable series (<3 years outdoors) with permanent adhesive

Easy application to flat, smooth surfaces. Dry application only

Cuts and weeds easily

Apply cut letters with RTape® Conform® 4075RLA and printed graphics with RTape® Conform® 4760RLA application tape

Allow for 1/8"-1/4" border around the edges of printed graphics

Overlaminates can be used if extra protection is required

**Print Compatibility:** Eco-Solvent, True Solvent, UV Wide Format, Screen, Thermal Transfer

## Applications

- Cut Lettering
- Decals
- Point-of Purchase Signage
- Holiday Décor
- Bumper Stickers
- Fleet Markings
- Decorative In-Store Displays
- Seasonal Signage
- Decorative Labels
- Trade Show Graphics
- Event Signage
- Banner Graphics
- Name Plates





STOCKED PRODUCTS ▶

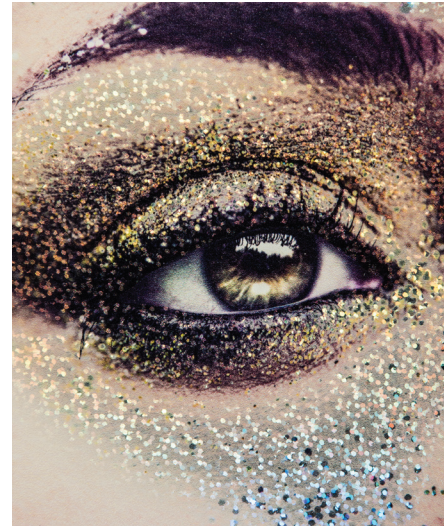
● Indoor Decorative: Roll Width (in) | ◆ Outdoor Durable: Roll Width (in)

METALLIZED VINYL

SMOOTH SILVER 24 48 54 ◆ 24 48	FINE BRUSH SILVER 24 48 54 ◆ 24 48	RAINBOW BRITE OVERALL 24 ◆ 24	METAL FLAKE SILVER 24 48	DIAMOND PLATE SILVER 24 48 ◆ 24 48
SMOOTH GOLD 24 48 54 ◆ 24 48	FINE BRUSH GOLD 24 ◆ 48	LARGE ENGINE TURN GOLD ◆ 24	METAL FLAKE GOLD 24	FLORENTINE LEAF GOLD 24 ◆ 24
SMOOTH ROSE GOLD 24 48 ◆ 24 48	FINE BRUSH ROSE GOLD 24 48 ◆ 24 48			

Pattern	Color	Stocked Sizes			Make to Order	
		24" x 50 yd	48" x 50 yd	54" x 50 yd	24" x 10/250 yd	48" x 10/250 yd
Smooth	Silver	●◆	●◆	●	●◆	●◆
	Gold	●◆	●◆	●	●◆	●◆
	Rose Gold	●◆	●◆		●◆	●◆
Fine Brush	Silver	●◆	●◆	●	●◆	●◆
	Gold	◆	◆		◆	◆
	Rose Gold	●◆	●◆		●◆	●◆
Rainbow Brite Overall	Silver	●◆			●◆	
Large Engine Turn	Gold	◆			◆	
Diamond Plate	Silver	●◆	●◆		●◆	
	Silver	●	●		●	●
Metal Flake	Gold	●			●	
	Gold	●◆			●◆	
Florentine Leaf	Gold				●◆	





Pattern/Color	SKU#	Size
<b>Indoor Decorative</b>		
Smooth Silver	XM31B6501331	24" x 50 yd
	XM31B65012021	48" x 50 yd
	XM31B65014021	54" x 50 yd
Smooth Gold	XM31B6502331	24" x 50 yd
	XM31B65022021	48" x 50 yd
	XM31B65024021	54" x 50 yd
Smooth Rose Gold	XM31B66002331	24" x 50 yd
	XM31B660022021	48" x 50 yd
Fine Brush Silver	X651B6501331	24" x 50 yd
	X651B65012021	48" x 50 yd
	X651B65014021	54" x 50 yd
Fine Brush Rose Gold	X651B66002331	24" x 50 yd
	X651B660022021	48" x 50 yd
Rainbow Brite Overall Silver	DR791B6501331	24" x 50 yd
Metal Flake Silver	DC21B6501331	24" x 50 yd
	DC21B65012021	48" x 50 yd
Metal Flake Gold	DC21B6502331	24" x 50 yd
Diamond Plate Silver	XK3S1B6501331	24" x 50 yd
	XK3S1B65012021	48" x 50 yd
Florentine Leaf Gold	X441B6502331	24" x 50 yd

Pattern/Color	SKU#	Size
<b>Outdoor Durable</b>		
Smooth Silver	XM3DA2501331	24" x 50 yd
	XM3DA25012021	48" x 50 yd
Smooth Gold	XM3DA2502331	24" x 50 yd
	XM3DA25022021	48" x 50 yd
Smooth Rose Gold	XM3DA26002331	24" x 50 yd
	XM3DA260022021	48" x 50 yd
Fine Brush Silver	X65DA2501331	24" x 50 yd
	X65DA25012021	48" x 50 yd
Fine Brush Gold	X65DA2502331	24" x 50 yd
	X65DA25022021	48" x 50 yd
Fine Brush Rose Gold	X65DA26002331	24" x 50 yd
	X65DA260022021	48" x 50 yd
Large Engine Turn Gold	X19DA2967331	24" x 50 yd
Diamond Plate Silver	XK3SDA2501331	24" x 50 yd
	XK3SDA25012021	48" x 50 yd
Florentine Leaf Gold	X44DA2502331	24" x 50 yd

24/48" x 10/250 yd roll variations are available upon request.

## TECHNICAL DATA ▶

		Indoor Decorative	Outdoor Durable
<b>Physical Properties</b>			
<b>Finish</b>		Various - See Chart	Various - See Chart
<b>Color</b>		Various - See Chart	Various - See Chart
<b>Adhesive</b>		Permanent	Permanent
<b>Film</b>		Metalized Vinyl	Metalized Vinyl
<b>Liner</b>		88# Liner	88# Liner
<b>Opacity</b>		2.2 minimum	2.2 minimum
<b>Thickness</b>	Film	3 mil +/- 10%	3 mil +/- 10%
	Film + Adhesive	3.7 mil	3.7 mil
<b>Adhesion*</b>	Stainless Steel	28 N/100 mm (25 oz)	Good adhesion to a wide variety of signs
<b>Weight</b>	Film + Adhesive	127 - 142 gsm	127 - 142 gsm
	Total w/ Liner	270 - 290 gsm	270 - 290 gsm

		Indoor Decorative	Outdoor Durable
<b>Conditions for Use</b>			
<b>Shelf Life</b>		1 year	1 year
<b>Outdoor Durability</b>		Indoor use only	Up to 3 years
<b>Min Application Temp</b>		40° F (4° C)	40° F (4° C)
<b>Service Temp Range</b>		-20° to 130° F (-29° to 55° C)	-20° to 130° F (-29° to 55° C)
<b>Solvent Resistance</b>		Yes	Yes
<b>Water Resistance</b>		No	No

The information provided herein is correct to the best of Nekoosa's knowledge. No liability for any errors, facts or opinions are accepted. Customers must satisfy themselves as to the suitability of this product for their application. No responsibility for any loss as a result of any person placing reliance on any material contained herein will be accepted.